

INDIAN SOCIETY FOR
APPLIED BEHAVIOURAL SCIENCE



Fifty Years of Individual and
Organisation Development

NORTHERN REGION PRESENTS



DATES : FRIDAY 23RD AUGUST TO TUESDAY 27TH AUGUST 2024

Venue:
**The Ocean Pearl Retreat
Chattarpur Mandir Rd, Ansal Villas, Sat Bari,
New Delhi - 110074**



About Human Process Laboratory (Lab)

Typically, in a Human Process Laboratory, a group of around 10-12 participants work together along with facilitator/s to deepen the understanding of human behaviour and the various interlinked aspects through experience, reflection and active experimentation with new behaviours in a contained manner / safe space. The participants discover their strengths, patterns of their behaviour in interpersonal and group interactions, the way they perceive others, and are perceived by others. The group uses the 'here and now' experience to derive this learning, utilising each other as a resource. The facilitator/s support in creating a climate for such learning.

IMPORTANT NOTE TO PARTICIPANTS:

1. Human Process Labs bring with them a certain depth and churning. It can be a thrilling as well as demanding learning journey, which continues beyond the labs. It is important that one recognizes the unusual circumstances that we are in and seek support if needed once the lab closes for the day.
2. ISABS will extend the best possible support to all participants, within the restrictions placed upon us by the current pandemic.
3. In sending us your nomination, you are confirming to ISABS that you have read and understood the details of the event as well as the consent form and that you agree to take responsibility for the unique outcomes of the program, when you nominate yourself for the lab.
4. Your nomination will be accepted subject to the norms laid down by Government of India regarding Pandemic.

CAUTIONARY NOTICE: A person who has experienced continuous mental stress or has been under psychiatric treatment or has a history of mental disorders, or has had a coronary/heart attack, or has been under medical treatment for prolonged stress inducing medical conditions, must not self-nominate or be nominated to ISABS labs. ISABS is not be responsible for any of such problems developed during or after participation in any lab. It is implicit that each participant joins the lab with informed voluntary consent and owns responsibility for his/her own health.

EVENT INFORMATION:

The event Venue: **The Ocean Pearl Retreat.**

For Details of the Venue visit <https://www.theoceanpearl.in/chattarpur/index.html>

The event will offer the following labs; (*Please see annexure 1 for details about each lab*).

- **Basic Human Process Lab (BLHP)** -- Entry level
- **Advanced Human Process Lab (ALHP)** --- Only for those who have been cleared to attend the ALHP by the facilitators of the last attended BLHP, within the stipulated time period of after 6 months and before 2 years gap after the last BLHP. Or for those participants who have been specifically recommended to do an ALHP as a part of their learning journey with ISABS by Dean(s) PDP or mentor in discussion with Dean(s) PDP.

Medium of Communication: English, Hindi (participants can opt for choice of medium. The lab in the preferred medium of language will be offered only if there are minimum 10 preferences)

Dates: 23RD AUGUST TO 27TH AUGUST 2024

Timings: 9:00 a.m. to 6:30 p.m. on 23rd, 24th and 25th August 2024.

9:00 am to 7:30 p.m. on 26th August, 2024 (8:00 pm to 10:30 pm Community Get-together)

9: 00 a.m. to 4:00 p.m. 27th August. End of program

Attendance in all sessions including Community Get-together is mandatory. (Exact timings may vary, so please seek updates. Full attendance in all session MANDATORY)



PROGRAM FEES, DISCOUNTS AND BURSARIES

Participants are requested to make payments after receiving an enrolment acceptance from Regional Coordinator Northern India Region, ISABS. Enrolments will be confirmed only after we have received your consent as per the attached consent form, which elaborates the unique nature of this program. Payments made without duly signed consent form will be reversed to your account within 24 hrs.

Program fee & Sponsorship categories :

Sr. No.	Participant/ sponsorship type	Basic Fee	AM fee*	Discount	After Discount	GST @ 18%	Total fee
1	Double occupancy: <i>Corporate and Public sector organizations</i>	₹50,000	₹250	₹0	₹50,250	₹9,045	₹59,295
2	Single occupancy : <i>Corporate and Public sector organizations</i>	₹65,000	₹250	₹0	₹65,250	₹11,745	₹76,995
3	Double occupancy: <i>Social & education sector and self-sponsored individuals</i>	₹45,000	₹250	₹0	₹45,250	₹8,145	₹53,395
4	Single occupancy : <i>Social & education sector and self-sponsored individuals</i>	₹60,000	₹250	₹0	₹60,250	₹10,845	₹71,095
5	Double occupancy: <i>Full Time Students under 30 years of age</i>	₹42,000	₹250	₹0	₹42,250	₹7,605	₹49,855
6	Non-Residential Fee	₹42,000	₹250	₹0	₹42,250	₹7,605	₹49,855

Note to Participants:

1) Limited number of Single occupancy rooms are available on request at a higher fee
 2) Staying at the event venue is recommended for learning effectiveness, though it is not mandatory. Participants can make their own arrangements for stay as per their convenience by opting to stay in a nearby budget accommodation, if they so wish. Such participants can avail of the non-residential option. 3) Transportation to and fro is to be borne by participants. Arriving late is not an option.

* Associate Membership Fee: ISABS programs are available only to its members. The AM fee will enroll you as an associate member for a period of 1 year from 27th August 2024 up to 27th August, 2025. If you have paid it any time during the running year before this program, till date of registration and payment, you may deduct the due amount (Rs.250/-) from the total fee payable and mention details of the AMF paid in the nomination form.



INCLUSIONS:

- **For residential participants:** All costs related to the labs, reading material etc. Accommodation from the time of check-in till check-out, breakfast, lunch, dinner, mid-morning and evening tea with cookies.
- **For non-residential participants:** All costs related to the labs, reading material etc. Lunch, mid-morning and evening tea with cookies and dinner on the day of the party.
 - *Breakfast and Dinner on extra payment of INR 1200 and INR 1400 respectively, can be made available subject to prior intimation and taxes as applicable, if any.*

EXCLUSIONS:

Anything that is outside the above mentioned services as “inclusions”, is excluded from the scope the fees per participant. Participants availing any such/other services at the venue will have to settle the bills for the same on their own.

FOR INTERNATIONAL PARTICIPANTS:

You may like to check the exact amount to be paid using <https://www.xe.com/currencyconverter/>. Alternately, you can write to us for the exact amount to be paid at admin@isabs.org

DISCOUNTS:

- **Early Bird discount** - 15% on Basic Fee if nomination and fees received before 15th July 2024.
- **Group Discount** of 10% on Basic Fee for a group of 4 or more participants registered together and fees paid in a single payment on or before 15th July 2024.
- **Super Bonanza** – 25% Early Bird plus group discount for a group of 5 or more participants registered and fees paid in a single payment on or before 10th July 2024.

REGISTRATION AND PAYMENT DETAILS

REGISTRATION:

Please register yourself and/or ask nominees from your organisation to register using the appropriate link by accessing our LMS portal <https://lms.isabs.org>.

- *Alternately, you can download the nomination form from Events page on www.isabs.org.*
- *Nominations will be accepted on a first come first served basis and would be considered as confirmed only after full payment of fees and after we received your consent form (signed hard copy OR accepted as signed on LMS).*

PAYMENT METHOD:

Online Bank Transfer: Before you make the payment, kindly ascertain the exact amount that you need to pay with our accounts team, if you are unsure.

Account Details for IMPS or NEFT.

- Account Name: **“Indian Society for Applied Behavioural Science”**
- Account type and number: **Savings A/c no. 236601000001628**
- Bank name and address: **Indian Overseas Bank, Yusuf Sarai C-1 Green Park Extension branch, Delhi 110016**
- **IFSC code: IOBA0001070**



Demand Draft (DD): DD drawn in favour of “Indian Society for Applied Behavioural Science” payable at New Delhi. The DD may be sent, along with duly filled Nomination Form to the following address specifically marked on the envelop :

“Fee for BARKHA 2024” and addressed to Shubhojeet Pal, ISABS OFFICE, B-1/33A, Mezzanine Floor, Hauz Khas, New Delhi, Delhi 110016

For Confirmation of Payment and Nomination status please contact

Satyakki Bhattacharjee at +91- 8800605210, 9999000324,

E-mail id rc.north@isabs.org

(DO DROP MESSAGE QUOTING ‘BARKHA 2024’ ENQUIRY’ IN CASE YOUR CALL IS NOT ANSWERED. FOR SURE YOU WILL BE CALLED BACK.)

CANCELLATION POLICY

Any cancellation after the confirmation of nominations will entail a deduction of 50% of the programme fee towards administrative costs incurred by us. Cancellations on or after 10 August, 2024, will NOT be entitled to any refund. However, a request to transfer the registration to another participant in the SAME lab, may be considered subject to written request being sent to us for the said transfer/ swap.

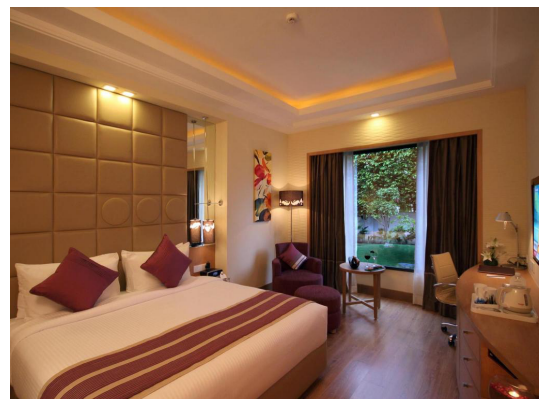
FOR ANY OTHER ENQUIRIES:

Write to us at rc.north@isabs.org OR admin@isabs.org



*The place is an important aspect of the curriculum and the two impacts learning
- Anonymous*

Photos: of Venue





ANNEXURE 1: ABOUT THE LABS

ISABS programmes focus on building competency in personal effectiveness and making it available for organizational and societal growth and development. Participants in ISABS labs are likely to become more sensitive to their and others' feelings, needs and behaviors as well as understand their own and others' behaviour more clearly.

ABOUT BLHP

This lab will focus on “self” and “group” and create conditions for intrapersonal, interpersonal and group level exploration. This lab is the beginning of a journey that takes the participant deeper into his/her self-awareness. BLHP is meant for persons interested in developing his/her personal and interpersonal competence and becoming more effective in groups.

Learning Objectives:

- Become aware of one’s patterns of behaviour
- Know the impact of one’s behaviour on others
- Know the impact of others' behaviour on oneself
- Improve one’s effectiveness in interpersonal interactions to derive greater satisfaction from others
- Discover one’s potential to live more effectively and meaningfully

ABOUT ALHP

This lab will be anchored more on “Self in group” and create conditions to deepen the journey of self-exploration that started in BLHP and/or ECHO lab in an ISABS event. The lab will explore the dimensions of inter-personal and group dynamics along with personal awareness. Those Individuals who have participated in Basic Lab on Human Processes or ECHO-II and have been cleared for attending or an Advanced Lab, may participate in ALHP.

Learning Objectives:

- Practice enhancement, consolidation, and reinforcement of the learnings from BLHP and afterward
- Identify and develop greater awareness of interdependent human processes
- Explore options to work on the dilemmas faced in inter and intra-personal situations
- Discover one’s potential for greater effectiveness in organizations and societies
- Practice listening and intervention skills; and develop human process sensitivity

Come & Grow with ISABS

WELCOME.